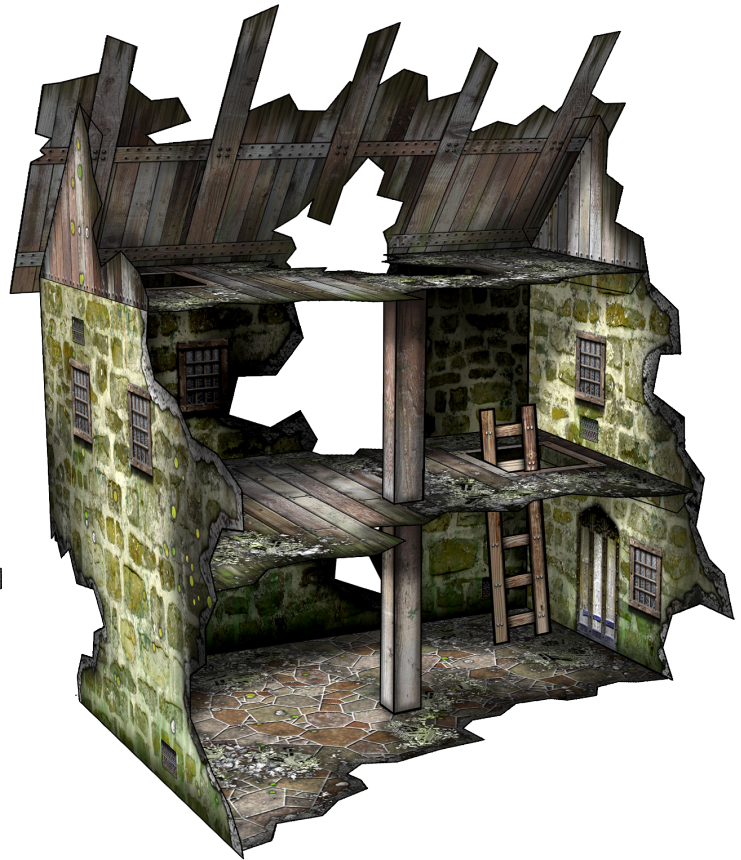


SPLIT RUIN

30MM SCALE CARDSTOCK TERRAIN FILES

BY DAVE GRAFFAM

www.davesgames.net



GLUE AND PAPER TIPS

To get the best results, you really need to experiment with different papers and glues, and take advantage of whatever printing methods are available to you.

In general, you want to print on the heaviest paper you can find. I prefer a 110# matte cardstock, but a good matte photo stock is also a great choice.

The best choice of paper and glue will depend a lot on the printing method that you choose. Desktop ink printers will be more likely to smear when you apply a wet paint to it, so you should look for a low-moisture, tacky glue. I've found that a carpenter's indoor wood glue works well for my projects, but there are lots of others that will work. Ordinary white school glue might be just fine.

A little bit of glue is usually all that's required. A thin and even coat is much better than a heavy glob of glue. I keep a supply of small squares of excess cardstock, and use the edges of those squares to spread glue evenly. It's a good idea to keep some slightly-damp tissue if you need to wipe up extra glue, but be careful about this if you're using ink-based prints.

USING THE TEXTURE LAYERS

This product contains PDF files with multiple layers that you can make visible or invisible. When you open a file, you'll see the default design. To make changes, open the Layers menu and expand the Layers Palette to reveal the selection of layers. Some of the layers will be visible; others will be invisible. Click on the 'eye' icon to change a layer's visibility. Choose your surface textures and add or remove external features. When you're happy with your design, just print it off.

PRINTING TIPS

These files are set up for the standard 28mm-30mm tabletop wargaming scale, and for US letter-sized (8.5" x 11") sheets. Turn off any 'fit to page' options in your printer driver. If you are printing on A4-sized sheets, you may want to reduce the print size to 95% of the original. Do this consistently when printing these files.

Print on heavy cardstock whenever possible. You can create super-sturdy models by printing on plain paper and then gluing this to a heavy bristol board before cutting.

DIFFERENT SCALES

To print at a smaller scale, use the table below and change your print size percentage.

SCALE	%
25mm	84%
20mm	65%
18mm (HO)	60%
15mm	50%
12mm	40%
10mm (N)	34%
8mm	27%
(Z)	23%
6mm	20%

ASSEMBLY INSTRUCTIONS

To create this model, you will need 7 sheets of cardstock (110# cardstock recommended), scissors, a hobby knife and glue. Print onto cardstock.

It's a good idea to cut around each separate piece, leaving some white space. Score where indicated (see below), and then fold the pieces. Some of the pieces are folded onto themselves and glued together so that they are printed on both sides.

Once the glue has dried, use a sharp hobby knife to cut just inside the black cut-lines. This will give you a clean-looking paper piece that matches on both sides, without any unprinted white paper showing. If you need to trim off a little extra, that's fine, too.

You should follow the trimming guides on the following pages, and use these color codes:

Carefully score with a hobby knife along the red lines. Next, carefully cut along the black lines with scissors or a hobby knife. Then, score on the back of the sheet and fold forward along the green lines. Fold back along the red lines.

Use the product images as your guide for assembly, and check it frequently before committing to gluing your pieces together. Common sense should tell you where most of the pieces go. If you make a mistake, just reprint the sections you need and start over.

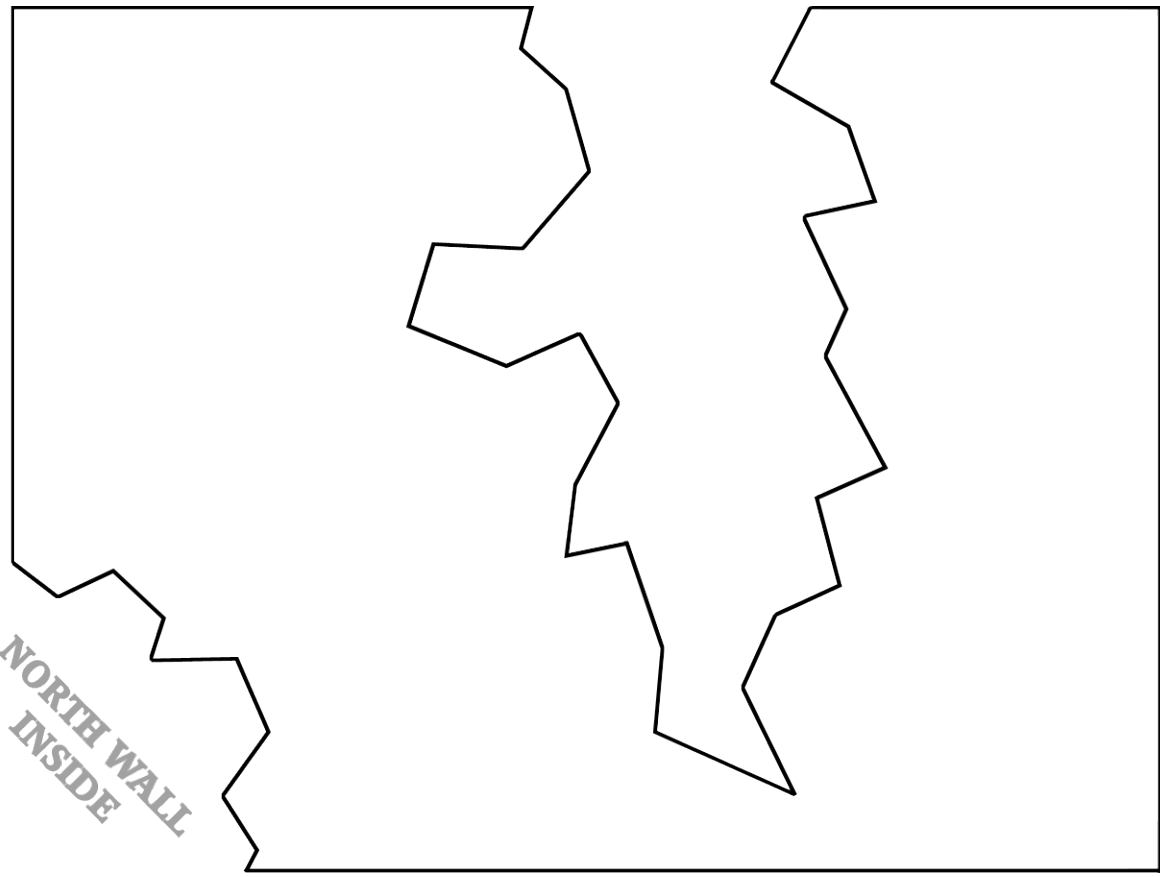
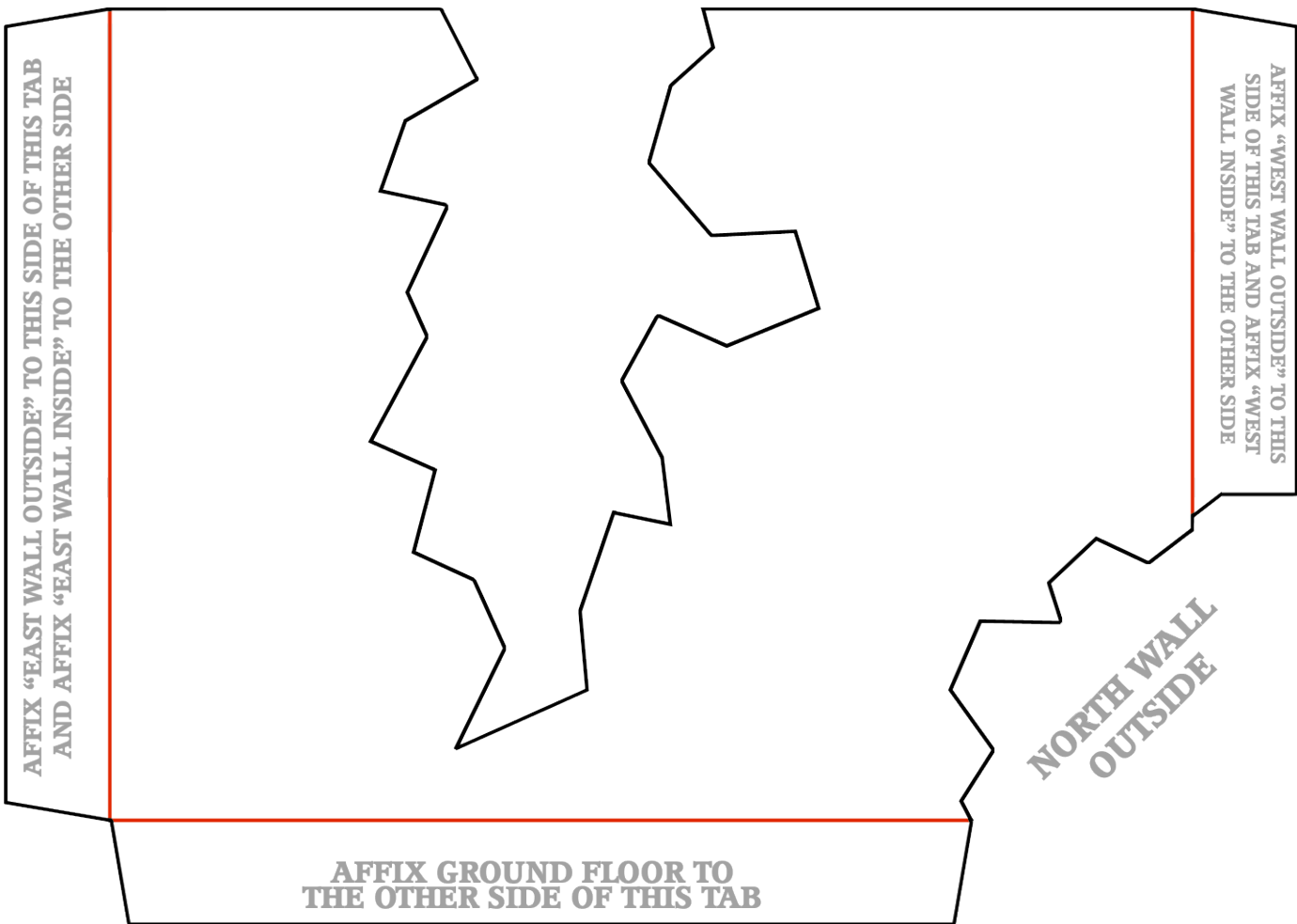
To assemble the various parts together, use the North wall piece as your centerpoint. Glue the East and West walls onto either side of the tabs on the North walls, and leave the entire assembly flat.

Next, glue the Support pieces underneath the First Floor and Second Floor pieces, leaving room for the broken gaps in the North wall. When those Support+Floor pieces are dry, glue them to the North inside wall in the proper places and let them dry.

Starting with one side or the other, glue the tabs on the Floor pieces and attach them to the East and West walls. You can then glue the Ground Floor piece to the three tabs along the bottom of the model. This should complete the main body of your structure.

The last step is to glue the Roof onto the tabs along the angled tops of the attic. You might want to add some glue along the edge of the Second Floor where it contacts with the Roof, giving you a nice seal there.

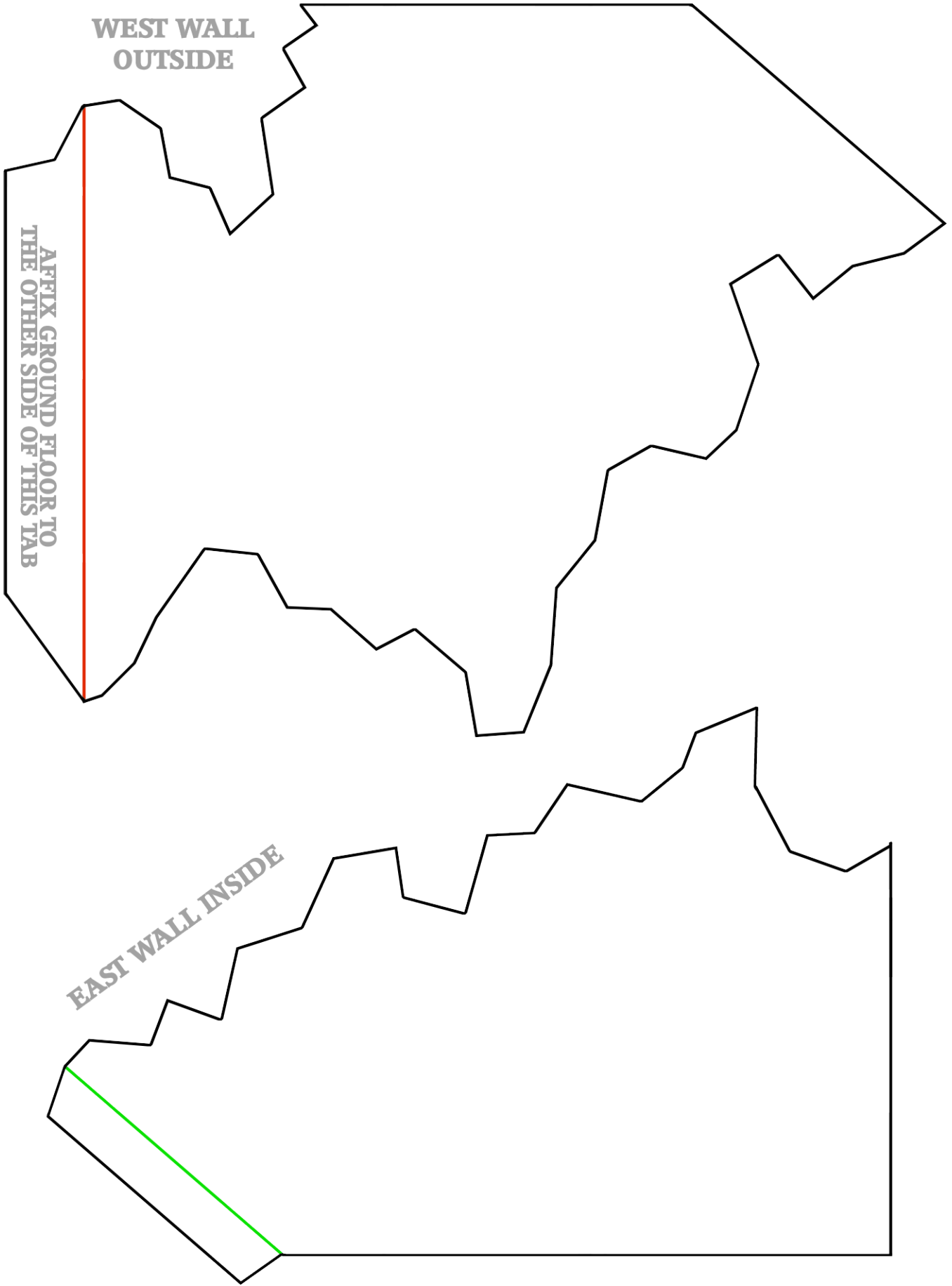
Optionally, you can add the Columns pieces to give additional support to the floors, and build the Ladders and Bridge piece as play accessories. Finally, you can finish this model by using a fine-line black marker to fill in the white edges.

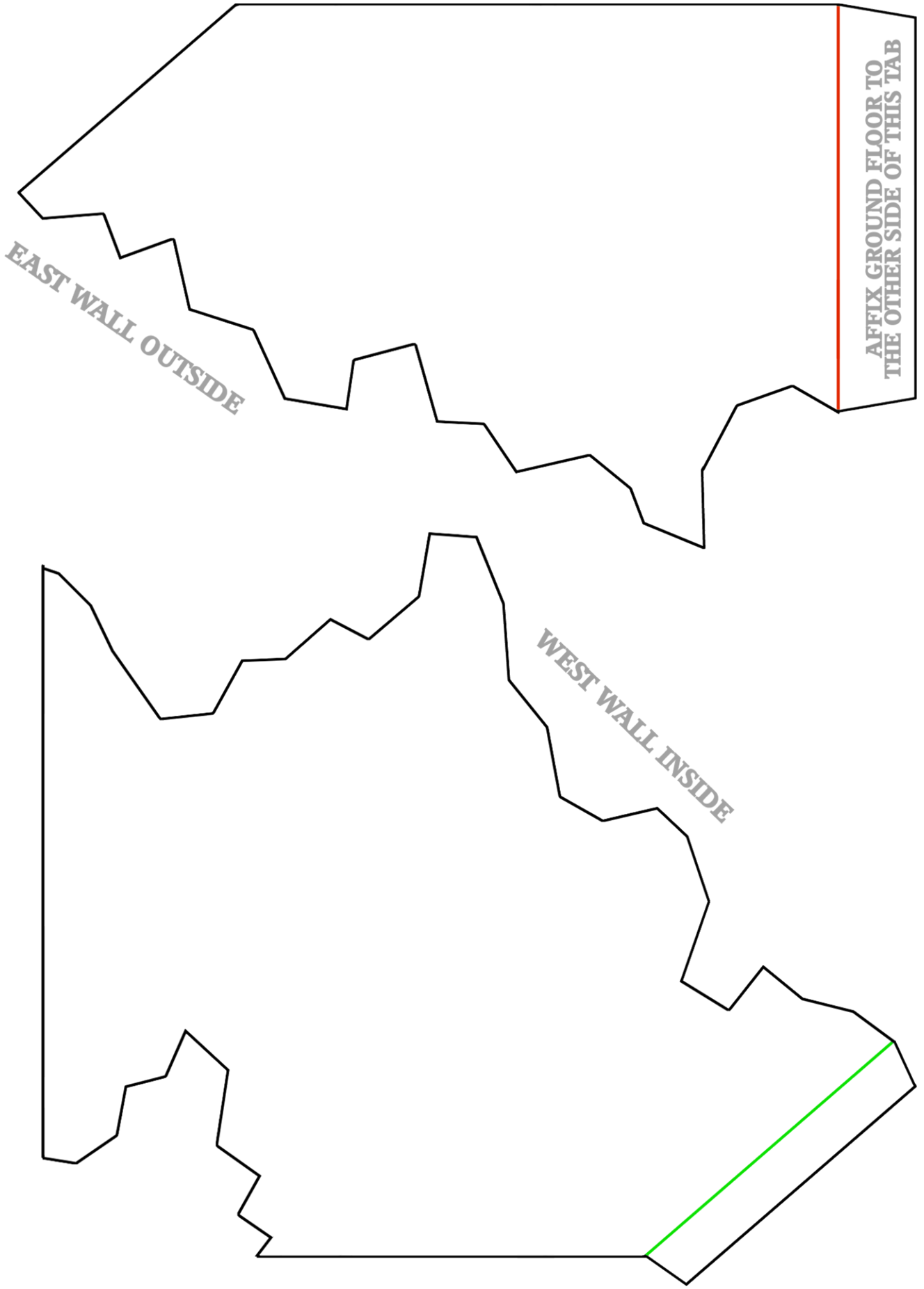


**WEST WALL
OUTSIDE**

**AFFIX GROUND FLOOR TO
THE OTHER SIDE OF THIS TAB**

EAST WALL INSIDE

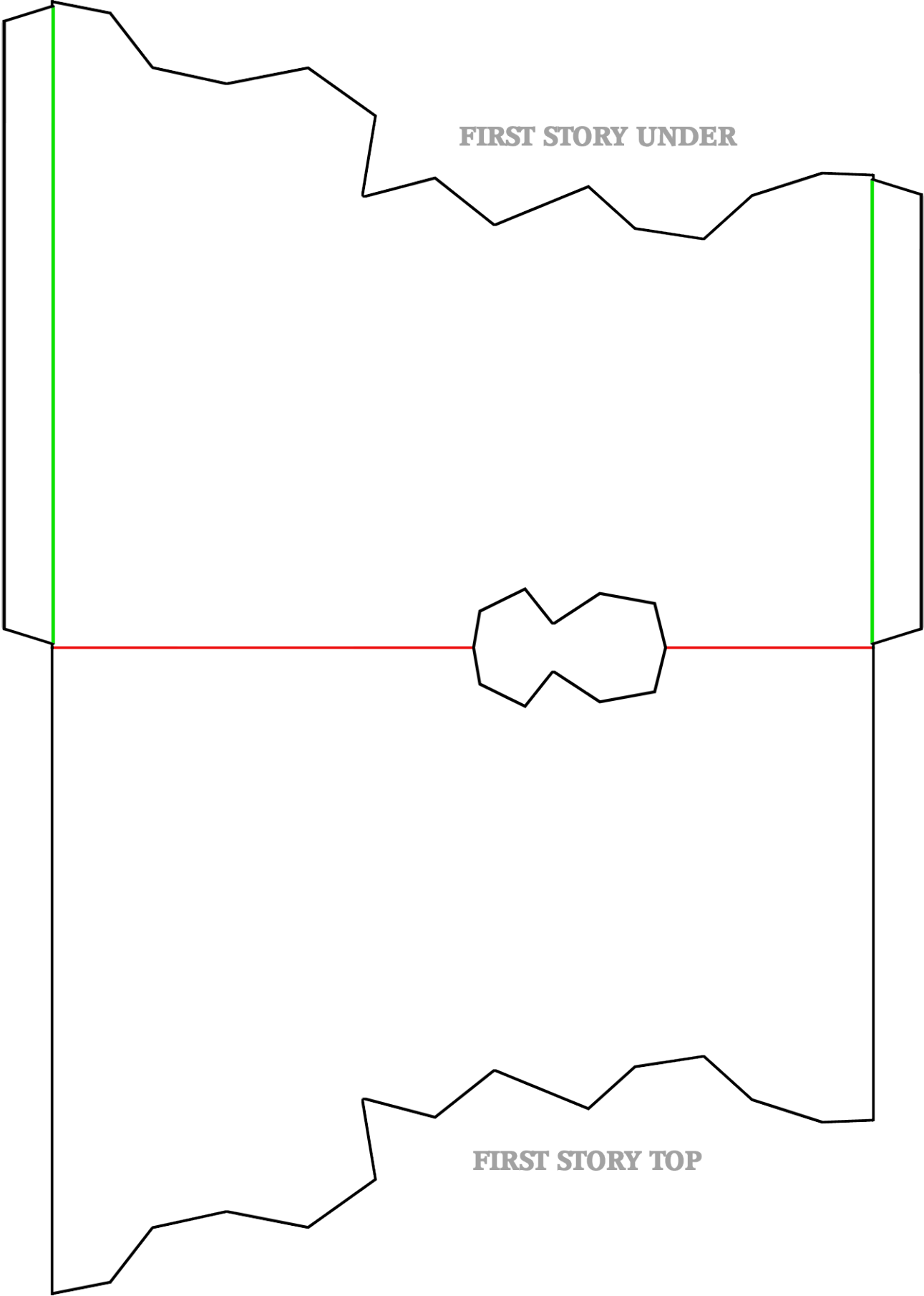




EAST WALL OUTSIDE

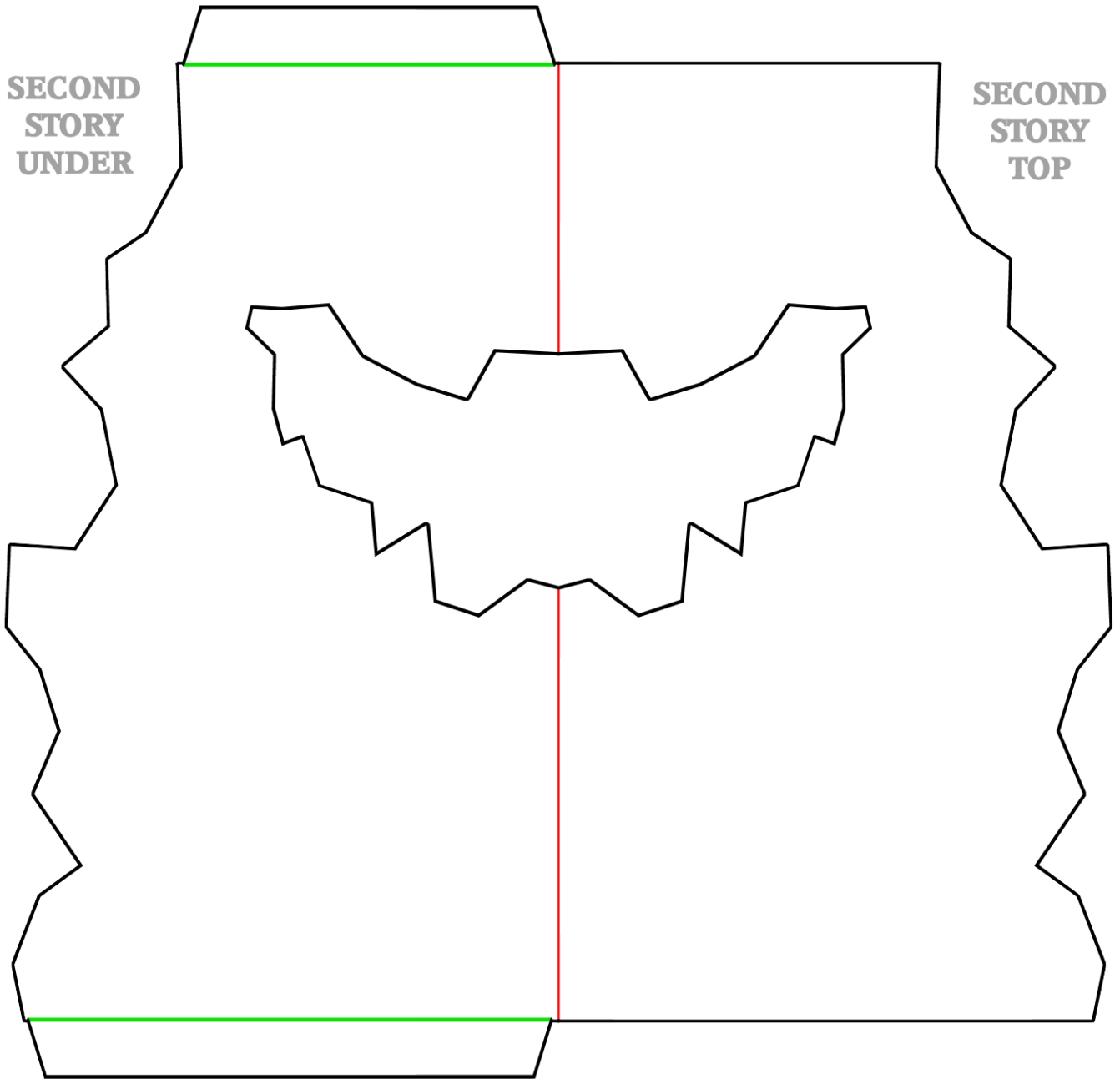
WEST WALL INSIDE

**AFFIX GROUND FLOOR TO
THE OTHER SIDE OF THIS TAB**

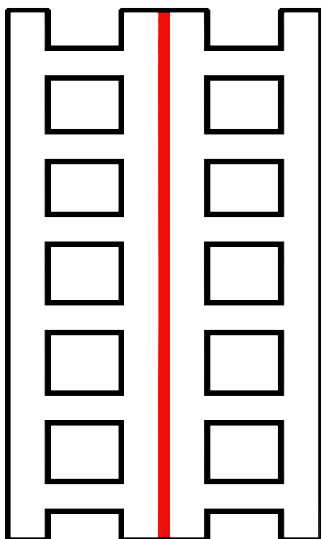


FIRST STORY UNDER

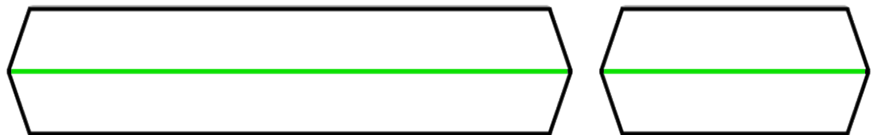
FIRST STORY TOP



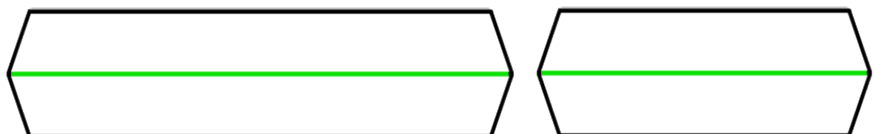
LADDER



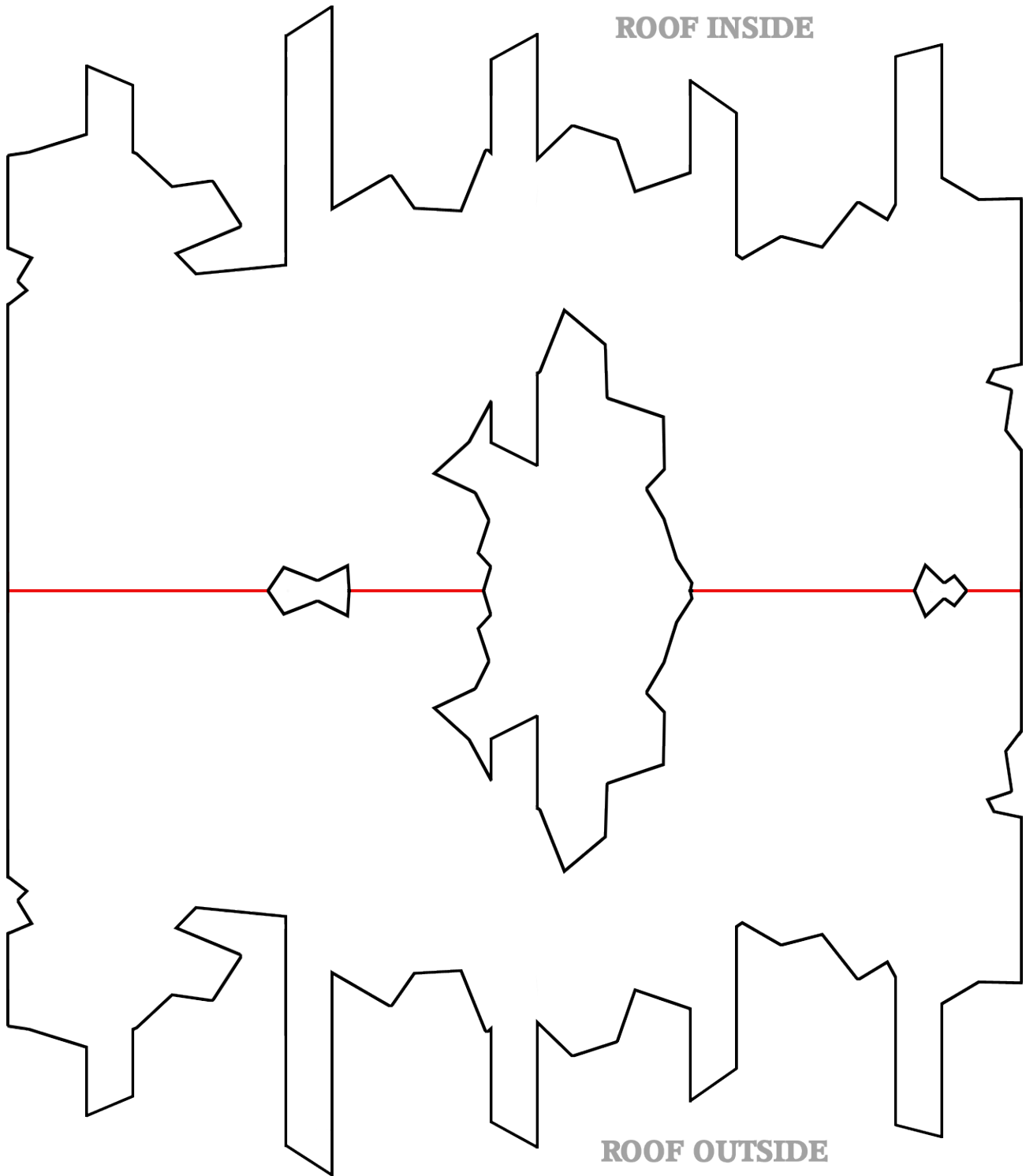
FIRST STORY SUPPORTS



SECOND STORY SUPPORTS

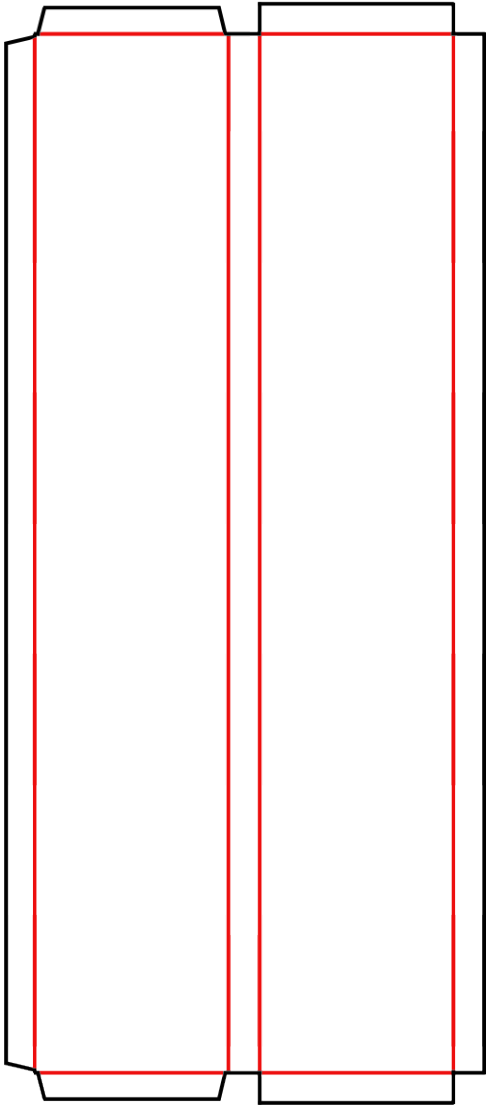


ROOF INSIDE

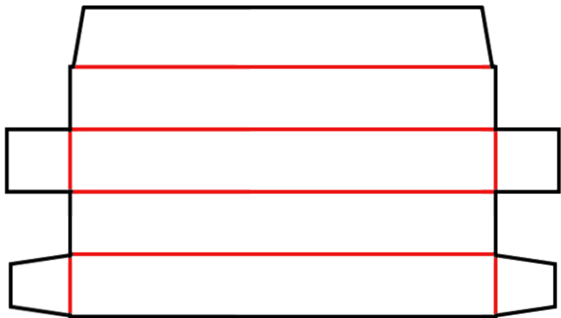
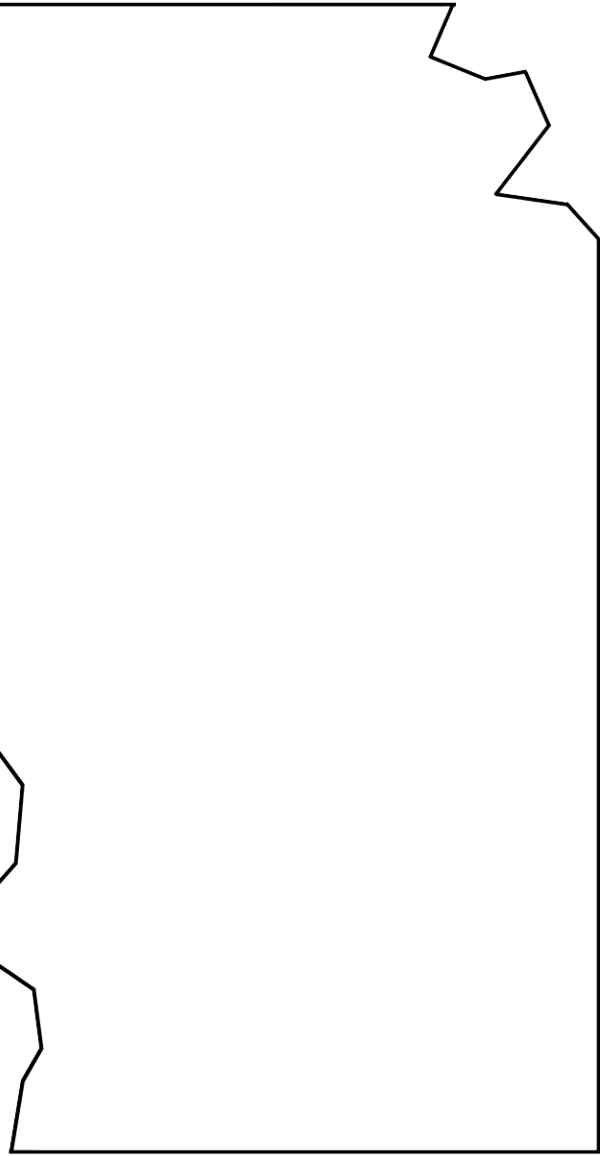


ROOF OUTSIDE

**GROUND
FLOOR**



BRIDGE



COLUMNS